

A G E N D A
BIG BEAR MUNICIPAL WATER DISTRICT

BOARD OF DIRECTORS
Regular Meeting
February 6, 2014

PLACE: Big Bear Municipal Water District
40524 Lakeview Drive, Big Bear Lake, CA 92315

Next Resolution Number: 2014-02

OPEN SESSION: 1:00 P.M.

- 1. CALL TO ORDER**
- 2. PLEDGE OF ALLEGIANCE**
- 3. DISCUSSION AND ACTION ON CLOSED SESSION ITEMS**
- 4. REPORTS**
 - A. General Manager
 - B. Lake Manager
 - C. Legal
 - D. Committee
 - E. Other
- 5. CONSENT CALENDAR**
 - A. Minutes of a Special Meeting Workshop of January 22, 2014
 - B. Minutes of a Special Meeting of January 23, 2014
 - C. Warrant List dated January 30, 2014 for \$34,955.12
 - D. Consider approval of a Special Event Permit for Redlands Bicycle Classic Time Trials being proposed for April 3, 2014 at the East Ramp
 - E. Consider approval of a Special Event Permit for the Big Bear Lake Rotary Club's Annual 4th of July Fireworks Display
- 6. BUSINESS**
 - A. District long and short term capital improvement plan – discussion only
- 7. PUBLIC FORUM**

(The Board will receive comments from the public on items not on the agenda; no action is permitted on these items. Time set aside not to exceed 30 minutes total by all participants)
- 8. ANNOUNCEMENTS**

9. DIRECTOR COMMENTS

10. ADJOURNMENT

NEXT MEETING: Open Session at 1:00 P.M.
Thursday, February 20, 2014
Big Bear Municipal Water District
40524 Lakeview Drive, Big Bear Lake, CA

PLEASE NOTE:

If you wish to address the MWD Board of Directors during discussion of an agenda item, or during the PUBLIC FORUM, please complete a Speaker Request card (blue in color) and give it to the Board Secretary. Unless a detailed presentation of an agenda item is required by the Board of Directors, it is requested that each speaker limit comments to FIVE MINUTES. All testimony given before the Board of Directors is tape recorded.

Agenda related writings or documents provided to the Board of Directors are available for public inspection at www.bbwwd.org or in the District office during business hours, 8:00 am – 4:30 pm Monday – Friday.

Big Bear Municipal Water District wishes to make all of its public meetings accessible to the public. If you need special assistance to participate in this meeting, please contact the Board Secretary. Notification 48 hours prior to the meeting will enable the District to make reasonable arrangements to ensure accessibility to this meeting

**MINUTES OF A SPECIAL MEETING WORKSHOP OF
BIG BEAR MUNICIPAL WATER DISTRICT
HELD ON WEDNESDAY, JANUARY 22, 2014**

The Open Session workshop began at 1:00 PM. Those in attendance included President Murphy, Director Lewis, Director Eminger, Director Smith, General Manager Scott Heule, Lake Manager Mike Stephenson, and Board Secretary Vicki Sheppard.

Catrina Rabago and two members of the public, Mason Perry and Jim Hart, were also present.

Stanfield Marsh Interpretive Signs

Draft language for the Stanfield Marsh Boardwalk Interpretive Panels from The Acorn Group was discussed (see attached). Mr. Heule reported that the concept would include 10 signs with 2 of the same signs at the gazebo as well as on the boardwalk. He noted that some of the copy information needs correction. Director Lewis commented that she would like the language to be more positive and animal friendly and not sounding so much like a "lecture". Director Eminger stated that he would like to say "Stanfield Marsh formerly known as Baker Pond" because so many people know the area as Baker Pond. President Murphy commented that he likes the "Just for Kids" idea. Mr. Heule apologized for not being able to have the draft available earlier and asked that the Directors read the draft language and give their feed back as soon as possible (at the Board meeting tomorrow).

Target Goals for Aquatic Plants

Mr. Stephenson projected a 2013 on the screen map of Milfoil and discussed aquatic plants and target goals. He explained that the photo was taken when the lake level was 4 ½ feet down from full. The areas to target for Milfoil, aquatic weeds, aesthetics, navigation, and fishing were discussed. Mr. Stephenson put up a second map of the TMDL target areas and TMDL targets and Chlorophyll trends were discussed (see attached). Director Smith commented that the general public does not understand the aquatic weed requirement and the need for aquatic weeds for the overall health of the lake. He added that it is a balancing act and the public does not understand that if we killed all the weeds we would have an algae bloom that would last for months. He stated that when we have an algae bloom we get calls that dogs are getting sick and that the lake looks horrible. President Murphy asked Mr. Stephenson how much (the maximum area) he would feel comfortable treating. Mr. Stephenson explained that he would be okay with treating up to 225 acres. Mr. Heule stated that weeds cause aesthetic problems adding that there are some areas that we can target for aesthetics. A blank lake map was passed out to each Director and they were asked to mark the areas where they think we should deal with weeds from an aesthetic viewpoint. Mason Perry, a member of the public, asked if we did not treat Milfoil for a season, how much new Milfoil would we probably get. Mr. Stephenson reported that it would most likely double. Mr. Perry asked what is the least Milfoil that we have ever had in the lake. Mr. Stephenson explained that now is the least we have ever had. The maps were collected and Mr. Stephenson drew the areas that everyone thought should be addressed for fishing and aesthetics on the map. When the map was completed it showed nearly the entire lake shoreline was thought to have some aesthetic problems. It was the consensus that we should treat Milfoil and harvest where we can. Mr. Heule explained that the map will be reviewed and considered and he and Mr. Stephenson will come up with a plan for 2014 that addresses the Directors input.

ADJOURNMENT

There being no further business, the workshop was adjourned at 2:57PM.

Vicki Sheppard
Secretary to the Board
Big Bear Municipal Water District

(SEAL)

Boardwalk panels:**MARSH STEWARDSHIP (duplicate panel at gazebo)****Vision, funding, and grit built Stanfield Marsh.**

What was once rooted in debris piles is now rooted in grasses and willows that beckon wildlife. In 1982 work began in earnest to transform an eyesore into a preserve. Working closely with the California Department of Fish and Wildlife, the Big Bear Municipal Water District dredged basins, laid culvert pipes to allow water to flow under the Stanfield Cutoff, and planted the shoreline. In 2003 the District built the island and later, the boardwalk. Local homeowners and Sierra Club members pitched in, planting rush and yarrow on the island and helping create a haven for nesting waterfowl.

Thanks to their efforts, many animals now call the marsh home. Depending on the season, you can see waterfowl, wading birds, and even bald eagles. Some stay for a season. Others stay year-round. Either way, they all contribute to the rich fabric of life at Stanfield Marsh.

Big Bear Valley supports the highest concentration of endemic, endangered, and sensitive species in the continental United States.

Stanfield Marsh contributes to this biological diversity, as habitat for thousands of wintering waterfowl, bald eagles, and other birds.

RISING FROM ASPHALT**The entrance to Stanfield Marsh was once a dumpsite.**

By the 1970s the wildlife in this area had seen better days. Piles of discarded asphalt lay in a heap. Open space along the shoreline was fast becoming private property. Building pads replaced feeding grounds and the valley's wet meadows had all but disappeared.

Grants enabled the Big Bear Municipal Water District to curtail shoreline development, clean and restore the site, and transform the landscape into the thriving wildlife preserve we see today. The District removed the asphalt debris, planted trees and shrubs, built the island and boardwalk, and created walking paths. Now the marsh serves as critical habitat for many species of birds, including several that are rare. It also serves as wildlife watching habitat for people.

The marsh's island serves as critical nesting habitat for waterfowl. The moat-like water barrier makes it difficult for predators to reach it. And the island's plants make it easy for nestlings to run for cover.

WILDLIFE FORAYS (duplicate panel at gazebo)**The marsh is a vibrant place throughout the year.**

Each season at the marsh brings a new mood and a different gathering of wildlife. Carp and catfish venture from the lake to the shallow water. Amphibians and songbirds find haven in the marsh vegetation, while herons, egrets, and other wading birds stalk the water's edge. Osprey and bald eagles also make grand appearances.

Keep an eye out for ducks, like mallards, teals, and buffleheads, which nest on the grassy island. This marsh is rich in riparian and marsh vegetation, making it a bed-and-breakfast for waterfowl needing a rest during long journeys along the Pacific Flyway. In the winter bald eagles and even more herons arrive at the marsh. While ducks dine on algae soup, the eagles and herons go fishing. The marsh is a sushi bar and a salad bar, depending on your bill.

Just for kids:

Can you match each bird with the feeding strategy it uses?

Dabbling duck—dip and splash

Egret—stab

Eagle—rip and tear

Blackbird—peck

THE WORTH OF THE MARSH**Part sponge, part filter, Stanfield Marsh benefits people too.**

Beauty aside, the marsh provides important services that benefit us. The soil, vegetation, and basin help manage storm events by slowing down floodwater and letting it spread out. During calmer times the marsh serves as a settling pond for sediments that otherwise could affect lake clarity. Suspended particles sink in the shallow water and become trapped in the silty bottom. Beneficial bacteria break down any contaminants into harmless components, while plants absorb other ones. Nature's services are effective and they come without a price tag!

Yet ecosystem services do not always translate into a specific job or financial equivalent. What price is placed on watching an eagle or enjoying a sunset on the boardwalk? For many, these "services" are priceless.

You've come to a great place for wildlife watching. It's also a place where nature is hard at work. As stewards, we can all enrich the marsh's value and protect the habitats marsh plants and wildlife call home.

NATURE YEAR-ROUND

Sunlight, temperature, and water determine nature's palette.

Season by season, the marsh reveals its true colors. With rainfall and snowmelt as the only sources of water, the marsh cycles dramatically between wet and dry, cool and warm. Summers are dry and warm, and hues of brown and gray dominate the landscape. Fall draws out the reds and purples. If winter rain has been abundant, spring can be a vibrant color spree as wildflowers blossom.

The seasons inspire moods among wildlife as well. Spring and fall are busy times for birds that rest and feed at the marsh during long trips to points north and south. The travelers and the year-round residents share the marsh, and bird song thickens in the brisk air. Winter signifies the reign of the eagle. Big Bear boasts the largest overwintering population in the state. Tune your ears for their shrill, raspy whistles or piping calls. Late spring and summer bring nesting waterfowl and shorebirds to the island and, soon, the chorus of baby birds. White pelicans cruise the water in the warmer months, resting and fattening up for their journey back north to the Central Coast.

Just for kids:

In winter scan the tall trees. Can you find any bald eagles? What behaviors do you see?

Calling (listen for a high-pitched piping or whistling)

Preening (tidying feathers with their beak)

Flying (gliding over the water)

Hunting (plunging talons into the water)

Eating (tearing meat with their beak)

MORE THAN BIRDS

This valley supports more species diversity than what you'd see traveling down the coast from Alaska to Baja California. Stanfield Marsh plays a significant role in this. It is not just home to birds, but also to fish, amphibians, and mammals.

Measuring the level of biological diversity in an ecosystem is like reading a thermostat. Generally speaking, high levels are associated with ecosystem productivity, health, and resilience. The fact that the marsh cultivates so much life means it is a busy place around the clock. The shoreline is wildlife's buffet line, and tracks in the mud hint at who dined out. Raccoons knead the mud for frogs. Coots slurp down algae and the occasional tadpole. Coyotes trot through the brush. In the shallows, fish loaf and nip at

insect larvae. We also play a part in the marsh's biodiversity, both through our presence and the stewardship values we hold.

Just for kids:

Pick a marsh animal from the list and play "Who Am I?" with a friend.

Beaver
Egret
Duck
Fish
Raccoon
Eagle

Don't tell your friend what animal you are. Give them clues and let them guess. Tell them about the food you eat, where you sleep, what kind of feet you have. Describe your day and the animals you meet. Can your friend figure out who you are?

Gazebo panels:

WELCOME TO THE STANFIELD MARSH

Stanfield Marsh is a great place to watch wildlife. Keep your eyes and ears open—you might discover a raft of bufflehead, a covert of coots, or even a pod of pelicans. The marsh is a thriving, 145-acre wildlife and waterfowl preserve where visitors can enjoy birding, walking, fishing, and time spent outdoors.

Fall and spring are particularly busy times at the marsh. Migrating waterfowl rest here and even nest here, taking advantage of the island for protection from predators. Bald eagles arrive in the winter. They perch in the tall pines and survey the watery landscape. Open water means open fishing for these hungry birds of prey.

The flat, meandering trail is about 1½ miles in length. The boardwalk takes you over the water, guiding you past grebes, gadwalls, gulls, and other denizens of the marsh.

Just for kids:

Guess the group

A group of eagles—congregation

A group of birds of prey—cast

A group of gulls—colony

A group of herons—sedge

A group of sparrows—host

SHARING A VISION

The District's initial focus in the 1960s was stabilizing the lake's water level. By the 1980s, their call to action expanded to include wildlife conservation and environmental education. Plans for Stanfield Marsh began taking shape in 1982. Together with the California Department of Fish and Wildlife, the District envisioned the establishment of a preserve at the east end of the lake. Historically a wet meadow and later a settling pond, the area was ultimately transformed into a marsh.

Years of cleanup, restoration, and monitoring have paid off. Today, birds are not the only ones that gather here; they are joined by anglers, birders, and outdoor enthusiasts.

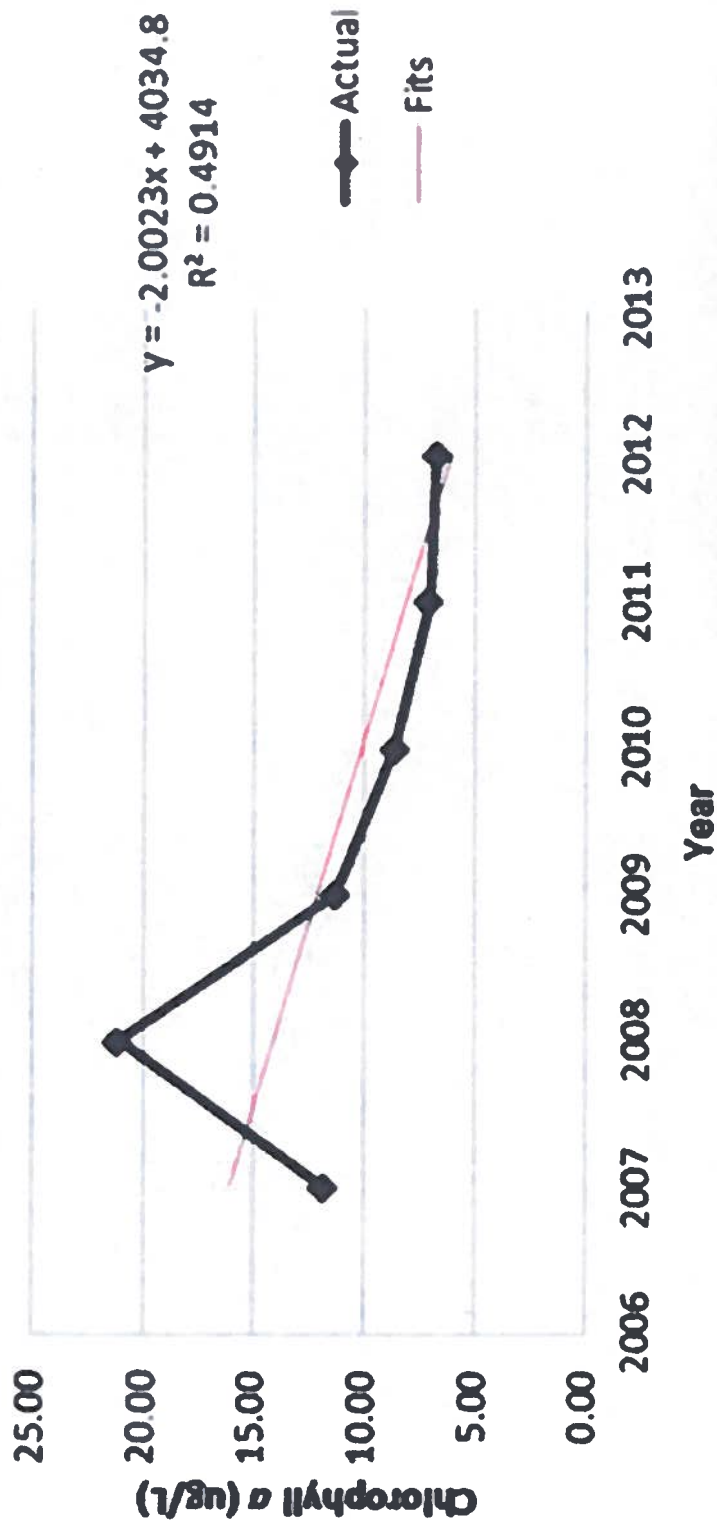


TMDL TARGETS

- Chlorophyll a (chla) 14 ug/L
- Phosphorous 35 ug/L average during growing season
- Milfoil reduction 95% on total lake area basis
- 30-40% aquatic plant coverage on total lake area basis

5 YEARS CHLOROPHYLL TRENDS

Trend Analysis Plot of Chlorophyll *a* in
Big Bear Lake



***MINUTES OF A SPECIAL MEETING OF
BIG BEAR MUNICIPAL WATER DISTRICT
HELD ON THURSDAY, JANUARY 23, 2014***

CALL TO ORDER

President Murphy called the Open Session to order at 1:00 PM. Those in attendance included Director Lewis, Director Suhay, Director Eminger, Director Smith, District Counsel Colin O'Neill (via conference call), General Manager Scott Heule, Lake Manager Mike Stephenson, and Board Secretary Vicki Sheppard.

DISCUSSION AND ACTION ON CLOSED SESSION ITEMS

President Murphy reported that there was no closed session at the January 9th meeting.

REPORTS

Mr. Heule reported that our proposed amendment to the in-lieu agreement has made significant progress both in detail and lower costs to Valley District. He explained that during the meeting Tuesday modeling results of 53 years of historic records indicate the average cost of the water to make this amendment happen is \$256 per acre foot. He added that this is very close to other programs Valley District has in place. He stated that there are still a few modifications that need to be made to the modeling. Mr. Heule explained that Valley would also like to see release rates in the term sheet increase closer to about 25 cfs from 15 cfs. He reported that this rate would more closely match Mutual's typical demand rate. He explained that to satisfy Valley's request for a higher release rate the District will need to modify the outlet works by up sizing the 6-inch bypass line to a 10 or 12-inch line with valve and flow meter. He reported that Valley indicated that they would cost share the expense of this modification. He added that one potential roadblock to this proposal identified during the modeling was that Valley can be in a situation where they are obligated to deliver water to Mutual but would not get credit in their Lake account because their accounts are full. Mr. Heule explained that this occurred once and only amounted to 19 acre feet but Doug Headrick indicated that he could not accept the plan if we could not resolve that specific issue. He reported that Don Evenson has an idea about how we can modify the term sheet to fix the problem adding that there are likely to be a couple other modifications that will be presented in the near future including allowances for fall releases at Lake levels lower than eight feet. He explained that one other aspect of the modeling results that everyone should be aware of is that out of the 53 years of record that was modeled, three years had lake levels a foot or less lower than they would otherwise be if the amendment is not implemented. He commented that this was caused by the advance of emergency storage after Valley's storage accounts had been depleted. Mr. Heule reported that also during the meeting Valley District indicated that although the Department of Water Resources has estimated that contractors will be getting 5% of their allocation in 2014, Valley is assuming that the actual number will be 0% unless something dramatic and unanticipated occurs. He added that Valley thinks that the only water they will get this year from north of Tehachapi will be their carryover

from last year. He explained that this situation might motivate them to finalize an amendment to the in-lieu agreement that would allow them to use their Lake account to offset the in lieu demands for Mutual. Mr. Heule reported that Crowell Weeden bought another \$250,000 CD for the District to replace one that was maturing. He explained that this new one with Compass Bank out of Birmingham, Alabama matures on July 29, 2015 and has an "excellent rate" of 0.35%. He reported that Kathy Bergmann at the ACOE is retiring the end of this month. He explained that this means that any additional credit for work in kind with the Corps study must be pretty much wrapped up within the next several days. He added that Mike Stephenson is working on a significant piece of this credit by tracking down costs and invoices for aquatic plant management consulting services that the District paid for in support of the Corps study.

Lake Manager Mike Stephenson reported that employment ads are out for clerk dispatch, ramp attendant, and lake patrol. He added that we have received over 35 applications already. Director Lewis asked if we were going to invite agency leaders to participate in the interview process like we did last year. Mr. Stephenson responded that we are going to do that again this season. He reported on a break in the aeration line. He explained that it was shut down and the line will be replaced in the next few days. He reported on a crisis with Department of Fish and Wildlife that may limit the amount of stocked fish we receive this year. He added that Mount Lassen Trout Farm had over 50,000 pounds of trout killed by a lightning strike so we can't purchase fish from them. He explained that Fish and Wildlife has contracted with other suppliers but he does not know how many fish we will be able to purchase for various fishing events. He added that our caged fish are in good shape and are worth a lot of money, but if he releases them he doesn't know how we will replace them. He reported that he is trying to get the Fishing Association back on board.

APPROVAL OF CONSENT CALENDAR

Upon a motion by Director Smith, seconded by Director Eminger, the following consent items were unanimously approved:

- Minutes of a Special Meeting of January 9, 2014
- Warrant List dated January 16, 2014 for \$16,300.44

CONSIDER APPROVAL OF A PROPOSAL FOR TECHNICAL SERVICES ASSOCIATED WITH THE DESIGN, MONITORING AND REPORTING OF AN ALUM TREATMENT

Mr. Heule reported that he and the Lake Manager have had recent conversations with the TMDL Workgroup members about helping to fund an alum treatment in the Lake. He explained that the Regional Board wants the named parties to pursue an "in Lake" project and an alum application would satisfy that objective. He added that discussions with the City of Big Bear Lake, City Engineer indicate that San Bernardino County MS4 dischargers (flood control, sanitary sewer responsible agencies) have committed \$350,000 to help fund an alum treatment in Big Bear Lake. He stated that knowing that this level of interest was likely to come forward the Lake Manager asked Michael Anderson at the University of Riverside to draft a proposal for technical services associated with the design, monitoring and reporting of an alum treatment in the Lake

this summer (2014). Mr. Heule explained that this work will be necessary in order to gain the necessary permits and complete CEQA documents for the treatment. He added that the work will include both water and sediment sampling and analysis to develop an alum dosage and application plan, monitoring during the course of the application and finally an analysis after the treatment that measures its success. He reported that the objective of the treatment will primarily be to sequester soluble Phosphorous in the sediment so that it is no longer available to be released into the water column. He explained that sequestering Phosphorous in the sediment eliminates its availability as a nutrient for aquatic plants and algae in the Lake. He added that the application would also be timely in that the TMDL target compliance date occurs in 2015, just a year after the treatment would be completed. Mr. Heule reported that the cost for the proposed scope of work is \$29,400. He commented that in addition to the technical studies, additional costs would be associated with permitting and the CEQA document and are estimated not to exceed \$15,000 to \$20,000. He stated that the total cost of the actual alum application is estimated to be \$750,000. He reported that the Committee recommends that the Board of Directors approve the scope of work and cost described in the Michael Anderson proposal and that it get paid for with Lake Improvement Fund dollars. President Murphy asked if there was a chance of any other grant money for the project. David Lawrence, City of Big Bear Lake, reported that he doesn't see any more than the \$350,000 that has already been approved. Mr. Stephenson explained that some of the money in Michael Anderson's bid is for work to be completed after the alum treatment so if the treatment does not happen, that money would not be spent. He explained that the work that would be done would be helpful even if the alum treatment is not completed. Mr. Lawrence explained that if this is approved today by MWD, the City will contact the Regional Board for their approval.

Director Smith moved approval of a proposal for technical services associated with the design, monitoring and reporting of an alum treatment. Director Suhay seconded the motion and it was unanimously approved.

Mr. Heule stated that perhaps we should modify the motion to incorporate approval of the Regional Board as a condition of our approval.

Director Smith moved approval of a proposal for technical services associated with the design, monitoring and reporting of an alum treatment and commitment of \$400,000 of District funds to the project as long as the project is approved by the Regional Board. Director Suhay seconded the motion and it was unanimously approved.

CONSIDER APPROVAL OF AN EQUIPMENT AND OPERATION GRANT AGREEMENT WITH THE STATE OF CALIFORNIA DEPARTMENT OF PARKS AND RECREATION, DIVISION OF BOATING AND WATERWAYS AND THE BIG BEAR MUNICIPAL WATER DISTRICT, AND AUTHORIZING THE EXPENDITURE OF \$14,000 TO EQUIP THE NEW PATROL BOAT

Lake Manager, Mike Stephenson reported that the District's Lake Patrol 2 was originally purchased with Boating and Waterways grant funding in 1995 and is in need of being replaced. He explained that last fall the District applied for a grant to replace the patrol boat and it has been approved in the amount of \$80,000. He added that this amount covers the cost of the boat but not radios, light bar or scanner equipment, which should not exceed \$14,000. He commented

that, as with all of the other boats purchased with grant funds, this new boat will be aluminum chambered. He reported that he has already begun working on the specifications for the new patrol boat and if the Board approves executing the grant contract bids will be sought. Mr. Stephenson stated that staff recommends that the Board accept the grant from the Division of Boating and Waterways and authorize the General Manager to execute the contract. He added that staff also recommends that the Board approve an expenditure not to exceed \$14,000 to outfit the new patrol boat with radios, light bar and scanner equipment. He explained that the current fiscal year budget includes an allocation of \$14,000 in the Capital Replacement Budget for the necessary additional equipment for a new patrol boat. Director Suhay asked if we can keep the added equipment from the old patrol boat rather than returning it. Mr. Stephenson stated that we own it and will be keeping it but explaining that it is old and we will still want to purchase new equipment and store the old to use as backup if needed.

Director Eminger moved approval of an equipment and operation grant agreement with the State of California Department of Parks and Recreation, Division of Boating and Waterways and the Big Bear MWD, and authorizing the expenditure of \$14,000 to equip the new patrol boat. Director Suhay seconded the motion and it was unanimously approved.

PUBLIC FORUM

No comments were made

ANNOUNCEMENTS

Mr. Heule announced that the next Board meeting will be February 6th. He added that our next Workshop is scheduled for February 19th at 1:00 PM explaining that the agenda will be issues from the Operations Committee. He reported that he will be out of the office visiting family in North Carolina for a week from Thursday, February 26 through Tuesday, March 4. He added that the Redlands Bicycle Classic is asking for an event application for their bicycle race to be held April 3rd and also asking to again use the East Launch Ramp to stage the event.

DIRECTOR COMMENTS

Director Eminger commented that the workshop yesterday was good. Director Lewis complimented Mr. Stephenson on the positive article in the Grizzly Wednesday.

ADJOURNMENT TO CLOSED SESSION

The meeting was adjourned to Closed Session at 1:50 P.M under Government Code Section 54956.8 Conference with Real Property Negotiator, Scott Heule General Manager, concerning 440 Catalina, Big Bear Lake, California, APN #2328-202-15, #2328-202-08, #2328-291-27

RECONVENE TO OPEN SESSION

The meeting was reconvened to Open Session at 2:09 P.M.
No reportable action.

ADJOURNMENT

There being no further business, the meeting was adjourned at 2:10P.M.

NEXT MEETING

Open Session at 1:00 P.M.
Thursday, February 6, 2014
Big Bear Municipal Water District
40524 Lakeview Drive, Big Bear Lake, CA

Vicki Sheppard
Secretary to the Board
Big Bear Municipal Water District

(SEAL)

4:09 PM

01/30/14

Big Bear MWD
Warrant List Detail
 January 17 - 30, 2014

Num	Type	Date	Name	Account	Paid Amount
152044	Liability Check	1/24/2014	LINCOLN NATIONAL	1001-01 · General Checking Account	
				2101-01 · Deferred Compensation	-1,575.00
TOTAL					-1,575.00
152045	Liability Check	1/24/2014	MID AMERICA APPLE PLAN	1001-01 · General Checking Account	
				2100-21 · Apple Plan - Company Pay	-33.76
				2100-20 · Apple Plan - Employee Pay	-33.76
TOTAL					-67.52
152046	Liability Check	1/24/2014	INFINITY TRUST (VSP)	1001-01 · General Checking Account	
				5509-03 · ADMIN-Memberships-Subscriptions	-10.00
				2100-09 · PR VSP Vision	-137.27
TOTAL					-147.27
152047	Bill Pmt -Check	1/24/2014	ALL PROTECTION ALARM	1001-01 · General Checking Account	
495272	Bill	1/2/2014		5640-02 · WATER-Dam Maintenance	-150.66
495658	Bill	1/2/2014		5630-10 · ADMIN-Bldg/Facility Maint/Rep	-204.40
495575	Bill	1/2/2014		5630-31 · MAINT-Bldg/Facil Maint/Rep-Shop	-90.00
495520	Bill	1/2/2014		5630-10 · ADMIN-Bldg/Facility Maint/Rep	-38.21
495455	Bill	1/2/2014		5630-10 · ADMIN-Bldg/Facility Maint/Rep	-170.67
495268	Bill	1/2/2014		5630-10 · ADMIN-Bldg/Facility Maint/Rep	-43.22
TOTAL					-697.16
152048	Bill Pmt -Check	1/24/2014	BBVMMA	1001-01 · General Checking Account	
PO16902	Bill	1/16/2014		5509-03 · ADMIN-Memberships-Subscriptions	-25.00
TOTAL					-25.00
152049	Bill Pmt -Check	1/24/2014	BIG BEAR CANVAS CO	1001-01 · General Checking Account	
2306	Bill	11/26/2013		5580-40 · OPS-Boat Maintenance	-482.00
TOTAL					-482.00
152050	Bill Pmt -Check	1/24/2014	BUTCHER'S BLOCK AND BUIL...	1001-01 · General Checking Account	
270246	Bill	1/9/2014		5630-42 · OPS-Bldg/Fac Mtn/Rep-EAST RA...	-60.34
271183	Bill	1/14/2014		5630-41 · OPS-Bldg/Fac Mtn/Rep-RV PARK	-21.17
272698	Bill	1/21/2014		5503-01 · ADMIN-Office Supplies-Office	-5.49
272682	Bill	1/21/2014		5580-41 · OPS-Boat Maintenance-Patrol	-9.17
272590	Bill	1/21/2014		5580-41 · OPS-Boat Maintenance-Patrol	-9.99
272955	Bill	1/22/2014		5543-30 · MAINT-Small Tools/Tool Supplies	-100.22
272843	Bill	1/22/2014		5630-41 · OPS-Bldg/Fac Mtn/Rep-RV PARK	-6.60
273134	Bill	1/23/2014		5640-01 · WATER-Aerator Maint	-16.51
TOTAL					-229.49
152051	Bill Pmt -Check	1/24/2014	BVE	1001-01 · General Checking Account	
010720...	Bill	1/7/2014		5507-41 · OPS-Utilities-Main Office	-15.21
010720...	Bill	1/7/2014		5507-41 · OPS-Utilities-Main Office	-28.96
010720...	Bill	1/7/2014		5507-41 · OPS-Utilities-Main Office	-951.98
010920...	Bill	1/9/2014		5507-44 · OPS-Utilities-Trout Pond	-25.52
TOTAL					-1,021.67
152052	Bill Pmt -Check	1/24/2014	CHARTER COMMUNICATIONS	1001-01 · General Checking Account	
011620...	Bill	1/16/2014		5505-08 · ADMIN- Phone Office DSL	-274.99
TOTAL					-274.99

4:09 PM
01/30/14

Big Bear MWD Warrant List Detail January 17 - 30, 2014

Num	Type	Date	Name	Account	Paid Amount
152053	Bill Pmt -Check	1/24/2014	CHEM-PAK	1001-01 · General Checking Account	
84779	Bill	1/9/2014		5504-31 · MAINT-Janitorial Supplies-Admin	-97.42
TOTAL					-97.42
152054	Bill Pmt -Check	1/24/2014	CONSTANT FIRE PROTECTION	1001-01 · General Checking Account	
102436	Bill	1/16/2014		5620-30 · MAINT-Equip Maintenance	-575.00
TOTAL					-575.00
152055	Bill Pmt -Check	1/24/2014	CSB INFORMATION SERVICES...	1001-01 · General Checking Account	
15973	Bill	12/31/2013		5509-10 · ADMIN-Member/Subs/Permit-Orgs	-500.00
TOTAL					-500.00
152056	Bill Pmt -Check	1/24/2014	CSB SOLID WASTE MANAGEM...	1001-01 · General Checking Account	
023867	Bill	1/14/2014		5630-30 · MAINT-Bldg/Facility Maint/Rep	-64.72
TOTAL					-64.72
152057	Bill Pmt -Check	1/24/2014	EADIE & PAYNE	1001-01 · General Checking Account	
122713	Bill	1/16/2014		5530-01 · ADMIN-Prof&Spec-Eadie&Payne	-1,605.00
TOTAL					-1,605.00
152058	Bill Pmt -Check	1/24/2014	ENTENMANN-ROVIN	1001-01 · General Checking Account	
0096136	Bill	1/13/2014		5541-42 · OPS-Uniform/Sm Equip Seas Empl	-232.30
TOTAL					-232.30
152059	Bill Pmt -Check	1/24/2014	MCMASTER-CARR	1001-01 · General Checking Account	
698900...	Bill	1/6/2014		5570-31 · MAINT-OSHA-Equipment	-92.45
700569...	Bill	1/7/2014		5630-10 · ADMIN-Bldg/Facility Maint/Rep	-127.36
TOTAL					-219.81
152060	Bill Pmt -Check	1/24/2014	MWH	1001-01 · General Checking Account	
1639266	Bill	1/21/2014		6100-06 · Dam Repair-Gen Engineering	-423.22
TOTAL					-423.22
152061	Bill Pmt -Check	1/24/2014	NAPA AUTO PARTS	1001-01 · General Checking Account	
174252	Bill	1/21/2014		5580-41 · OPS-Boat Maintenance-Patrol	-22.50
TOTAL					-22.50
152062	Bill Pmt -Check	1/24/2014	QUILL	1001-01 · General Checking Account	
8457761	Bill	1/7/2014		5503-01 · ADMIN-Office Supplies-Office	-4.83
8457700	Bill	1/7/2014		5503-01 · ADMIN-Office Supplies-Office	-50.74
TOTAL					-55.57
152063	Bill Pmt -Check	1/24/2014	RADIOSHACK CORPORATION	1001-01 · General Checking Account	
025152	Bill	12/2/2013		5630-40 · OPS-Bldg/Fac Mtn/Rep	-60.46
030292	Bill	12/16/2013		5505-01 · ADMIN-Phones Local/Hardware/...	-12.95
TOTAL					-73.41

4:09 PM
01/30/14

Big Bear MWD Warrant List Detail January 17 - 30, 2014

Num	Type	Date	Name	Account	Paid Amount
152064	Bill Pmt -Check	1/24/2014	SOUTHWEST GAS CORPORAT...	1001-01 · General Checking Account	
011720...	Bill	1/17/2014		5507-41 · OPS-Utilities-Main Office	-480.91
011720...	Bill	1/17/2014		5507-42 · OPS-Utilities-RV Park	-40.30
012020...	Bill	1/20/2014		5507-44 · OPS-Utilities-Trout Pond	-11.21
TOTAL					-532.42
152065	Bill Pmt -Check	1/24/2014	SUPERMEDIA	1001-01 · General Checking Account	
011920...	Bill	1/19/2014		5505-07 · ADMIN-Phone Office Web/Email	-59.90
TOTAL					-59.90
152066	Bill Pmt -Check	1/24/2014	VALERO	1001-01 · General Checking Account	
012120...	Bill	1/21/2014		5590-42 · OPS-Petroleum-VEHICLES	-120.79
TOTAL					-120.79
152067	Bill Pmt -Check	1/24/2014	VERIZON CALIFORNIA	1001-01 · General Checking Account	
122520...	Bill	12/25/2013		5505-05 · ADMIN-Phone Weather Station	-45.08
010120...	Bill	1/1/2014		5505-02 · ADMIN-Phones Ramps Local Svc	-50.59
010120...	Bill	1/1/2014		5505-03 · ADMIN-Phones Long Distance	-46.44
				5505-01 · ADMIN-Phones Local/Hardware/...	-375.78
TOTAL					-517.89
152068	Bill Pmt -Check	1/24/2014	VERIZON WIRELESS	1001-01 · General Checking Account	
971774...	Bill	1/3/2014		5505-06 · ADMIN-Phone Cell Phones	-76.06
				5505-11 · ADMIN-Phones Ramp Aircards	-62.40
				5505-11 · ADMIN-Phones Ramp Aircards	-62.40
TOTAL					-200.86
152069	Bill Pmt -Check	1/24/2014	XEROX	1001-01 · General Checking Account	
071916...	Bill	1/1/2014		5750-03 · Copier Lease Expense	-469.50
				5620-13 · ADMIN-Copier Maint/Repair	-78.56
TOTAL					-548.06
152070	Bill Pmt -Check	1/24/2014	VERIZON WIRELESS	1001-01 · General Checking Account	
971806...	Bill	1/9/2014		5505-06 · ADMIN-Phone Cell Phones	-159.87
TOTAL					-159.87
152071	Bill Pmt -Check	1/28/2014	PITNEY BOWES PURCHASE P...	1001-01 · General Checking Account	
011920...	Bill	1/19/2014		5501-01 · ADMIN-Post&Ship OFFICE	-31.21
TOTAL					-31.21
152072	Bill Pmt -Check	1/29/2014	FRANCHISE TAX BOARD	1001-01 · General Checking Account	
2012 F...	Bill	1/29/2014		5530-14 · ADMIN Professional Service Gen	-10.00
TOTAL					-10.00
152073	Liability Check	1/30/2014	LINCOLN NATIONAL	1001-01 · General Checking Account	
				2101-01 · Deferred Compensation	-1,575.00
TOTAL					-1,575.00

4:09 PM
01/30/14

Big Bear MWD
Warrant List Detail
January 17 - 30, 2014

<u>Num</u>	<u>Type</u>	<u>Date</u>	<u>Name</u>	<u>Account</u>	<u>Paid Amount</u>
152074	Liability Check	1/30/2014	MID AMERICA APPLE PLAN	1001-01 · General Checking Account	
				2100-21 · Apple Plan - Company Pay	-135.00
				2100-20 · Apple Plan - Employee Pay	-135.00
TOTAL					<u>-270.00</u>
152078	Liability Check	1/30/2014	ACWA HEALTH INSURANCE	1001-01 · General Checking Account	
				24000 · Payroll Liabilities	-1,312.00
				24000 · Payroll Liabilities	-660.70
				24000 · Payroll Liabilities	-20,223.01
TOTAL					<u>-22,195.71</u>
152079	Bill Pmt -Check	1/30/2014	DIRECTV INC	1001-01 · General Checking Account	
222994...	Bill	1/23/2014		5507-42 · OPS-Utilities-RV Park	-206.78
TOTAL					<u>-206.78</u>
152080	Bill Pmt -Check	1/30/2014	DWP	1001-01 · General Checking Account	
012320...	Bill	1/23/2014		5507-44 · OPS-Utilities-Trout Pond	-84.24
TOTAL					<u>-84.24</u>
152081	Bill Pmt -Check	1/30/2014	VERIZON CALIFORNIA	1001-01 · General Checking Account	
011320...	Bill	1/13/2014		5505-01 · ADMIN-Phones Local/Hardware/...	-53.34
TOTAL					<u>-53.34</u>

**BIG BEAR MUNICIPAL WATER DISTRICT
REPORT TO BOARD OF DIRECTORS**

MEETING DATE: *February 6, 2014*

AGENDA ITEM: *5D*

SUBJECT:

CONSIDER APPROVAL OF A SPECIAL EVENT PERMIT FOR REDLANDS BICYCLE CLASSIC TIME TRIALS BEING PROPOSED FOR APRIL 3, 2014 AT THE EAST RAMP

RECOMMENDATION:

The General Manager and the Operations Committee (Director Murphy & Suhay) recommend approval of this special event.

DISCUSSION/FINDINGS:

The Redlands Bicycle Classic is again asking to use the East Launch Ramp to stage their time trials as they did in 2013. Their event would be held on Thursday April 3, 2014 and they estimate that the number using the ramp parking lot will number 250 persons. The local contact for this event is Craig Smith (909) 645-1269. In order to accommodate this special event the East Launch ramp would be closed to boaters and they would be directed to Big Bear Marina where they could launch free of charge. The Committee recommends approval of this special event subject to the same conditions imposed in 2013 (see attached).

OTHER AGENCY INVOLVEMENT: None

FINANCING: None

Submitted by: Scott Heule, General Manager

EXHIBIT A

DESCRIPTION OF EVENT

1. Name of Event: REDLANDS BICYCLE CLASSIC
2. Primary contact name, mailing address, phone number, e-mail: CRAIG SMITH TOM HEARNS
PO BOX 11011
BBL CA 92315
3. Location of Event: EAST BOAT RAMP
4. Date(s): THURS, APR. 3, 2014 (909) 645-1269 (95) 966-6391
BIG BEAR CYCLING@GMAIL.COM
5. Describe Event: STAGE #2 - REDLANDS BICYCLE CLASSIC - TIME TRIAL TOM@DDAMSASSOCIATES.NET
6. Estimated Number of Participants: 250
7. Estimated Number of Spectators: 1000
8. Method of Limiting Attendance: PARTICIPANTS - PROFESSIONAL TEAM REGISTRATION, SPECTATORS - NONE
9. Method of Trash Collection and Disposal: BB DISPOSAL EVENT
10. Proposed First-Aid Services: 911
11. Proposed Security Services: NONE REQUIRED
12. Proposed Fire Protection Services: 911
13. Proposed Sanitation Facilities: BB DISPOSAL EVENT
14. Parking Arrangements: EAST BOAT RAMP - CYCLING TEAMS ONLY SPECTATORS - N. SHORE ELEMENTARY
15. Name, Address and Telephone Number of Person Available Before and During Event with authority to Control Event: CRAIG SMITH - BIG BEAR CYCLING (SEE INFO. ABOVE)
16. Perimeter control, if applicable: N/A

For District use only:

(601) Deposit \$ _____
Date _____ Ck # _____

(511) Fee \$ 100
Date 1/28/14 Ck # 1447

(540) Angler Fee \$ _____
Date _____ Ck # _____

EXHIBIT C

2014 SPECIAL CONDITIONS REDLANDS BICYCLE CLASSIC TIME TRIALS

1. Applicant shall post ramp closure advisory signs prior to the event at all road closure signage wherever they are placed, at least 7 days prior to the event.
2. Applicant shall make and post signs and print information flyers for April 1st and 2nd advising the East Ramp closure date and times using language and locations approved by the Lake Operations Supervisor.
3. Applicant will be given a key to use the morning of the event to unlock a lock in a daisy chain at the East Ramp gate for the date of the event only.
4. Applicant shall make arrangements, financial and/or otherwise, with Big Bear Marina to allow free of charge boat launching the day of the event.

**BIG BEAR MUNICIPAL WATER DISTRICT
REPORT TO BOARD OF DIRECTORS**

MEETING DATE: February 6, 2014

AGENDA ITEM: 5E

SUBJECT:

CONSIDER APPROVAL OF A SPECIAL EVENT PERMIT FOR THE BIG BEAR LAKE ROTARY CLUB'S ANNUAL 4TH OF JULY FIREWORKS DISPLAY

RECOMMENDATION:

The General Manager and the Operations Committee (Directors Murphy & Suhay) recommend approval of this event.

DISCUSSION/FINDINGS:

The Rotary Club of Big Bear Lake has requested again a special event permit for the Fourth of July Fireworks show on Big Bear Lake. In accordance with previous years the Committee recommends that District fees be waived for this event and that the following conditions of approval be included in their special event permit:

- Proof of liability insurance at least 30 days prior to the event.
- All vessels used during the fireworks event must be inspected prior to moving either of the barges to be sure they can meet all California carriage requirements including PFD's, fire extinguishers, and navigation lights. If the vessels cannot satisfy these requirements they will not be permitted to be used during the special event.
- Special event proponents shall meet with the Lake Manager on the day of the event for approval of show location on the lake and appropriate perimeter and safety controls.

OTHER AGENCY INVOLVEMENT: Big Bear Lake Fire Department

FINANCING: None

Submitted by: Scott Heule, General Manager

EXHIBIT A

DESCRIPTION OF EVENT

1. Name of Event: 4TH OF JULY FIREWORKS SHOW
2. Primary contact name, mailing address, phone number, e-mail:
SKIP SUHAY P.O. Box 795 B.B.L., CA 909 744-4383 - SKIPSUHAY@LIVE.COM
3. Location of Event: MIDDLE OF BIG BEND LAKE
4. Date(s): 7-4-14
5. Describe Event: FIREWORKS SHOW
6. Estimated Number of Participants: 20
7. Estimated Number of Spectators: 80,000
8. Method of Limiting Attendance: N/A
9. Method of Trash Collection and Disposal: ROTARY CLUB
10. Proposed First-Aid Services: BELFD
11. Proposed Security Services: ROTARY CLUB / BEND LAKE PATROL
12. Proposed Fire Protection Services: BELFD
13. Proposed Sanitation Facilities: BB DISPOSAL
14. Parking Arrangements: N/A
15. Name, Address and Telephone Number of Person Available Before and During Event with authority to Control Event: SKIP SUHAY 909 744-4383
16. Perimeter control, if applicable: BEND LAKE PATROL

For District use only:

(601) Deposit \$ _____
Date _____ Ck # _____

(511) Fee \$ _____
Date _____ Ck # _____

(540) Angler Fee \$ _____
Date _____ Ck # _____

**EXHIBIT C
SPECIAL CONDITIONS**

2014 4th OF JULY FIREWORKS

1. All District fees have been waived.
2. Proof of Liability Insurance is due at least 30 days prior to the event.
3. All vessels used during the fireworks event must be inspected prior to moving either of the barges to be sure they can meet all California carriage requirements including PFD's, fire extinguishers, and navigation lights. If the vessels cannot satisfy these requirements they will not be permitted to be used during the special event.
4. Proponents shall meet with the Lake Manager on the day of the event for approval of show location and appropriate perimeter and safety controls.